

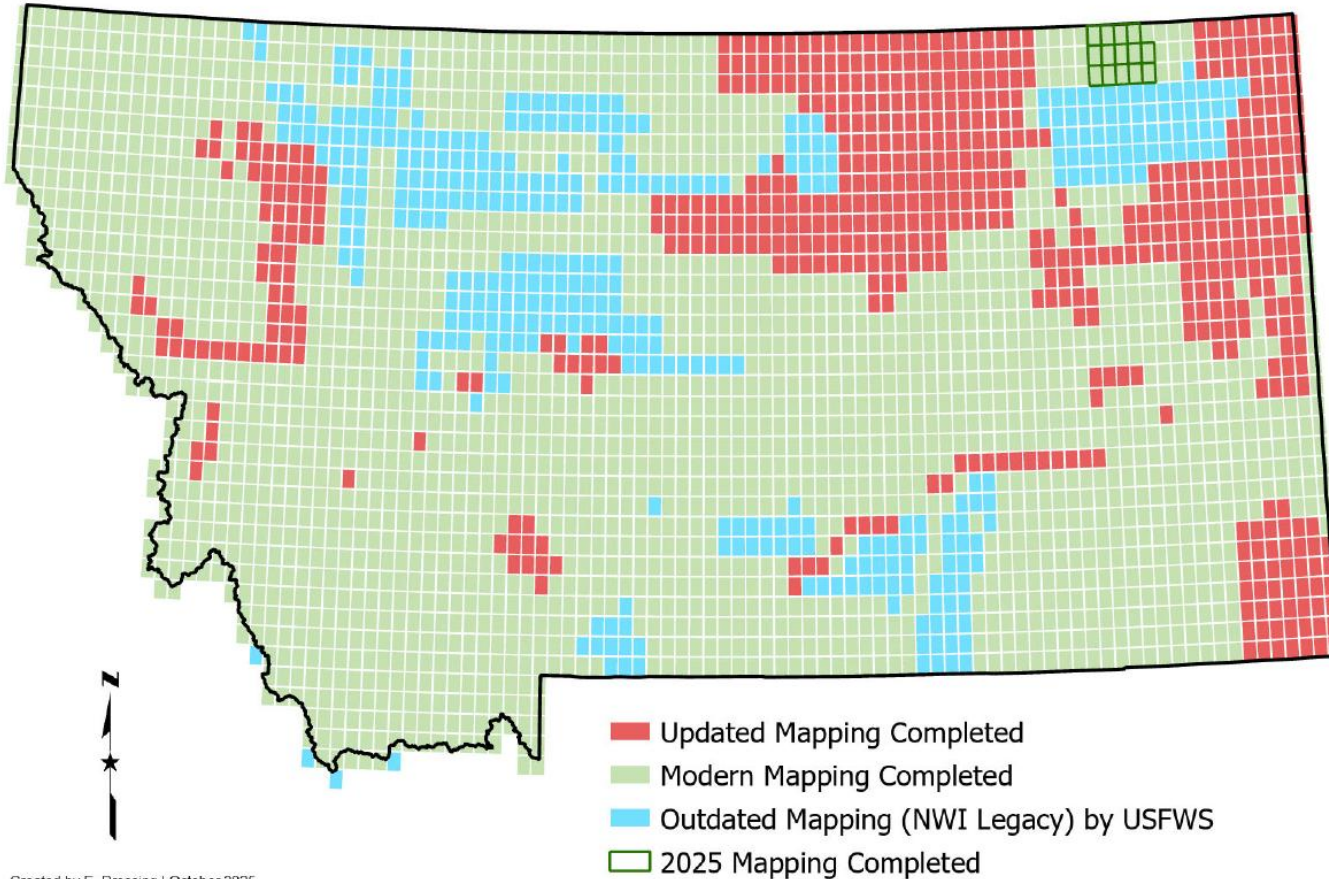


O'Connor Center Updates

Kay Hajek and Jennifer Jones

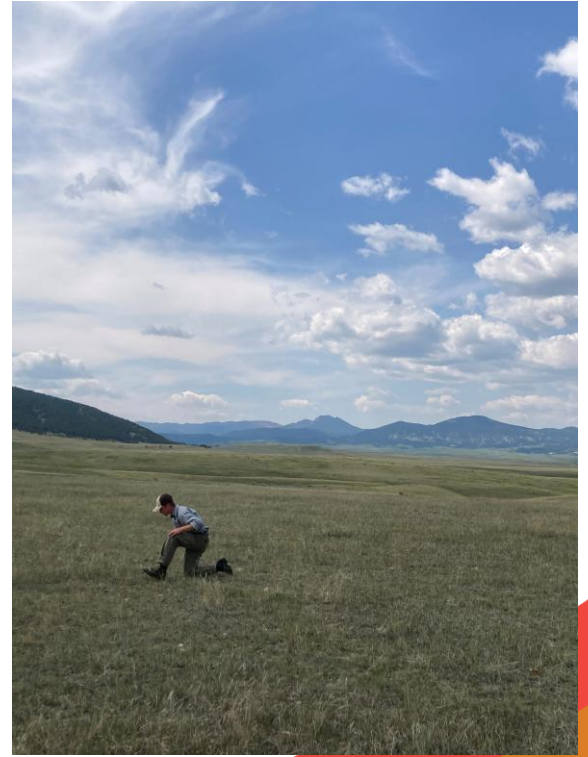


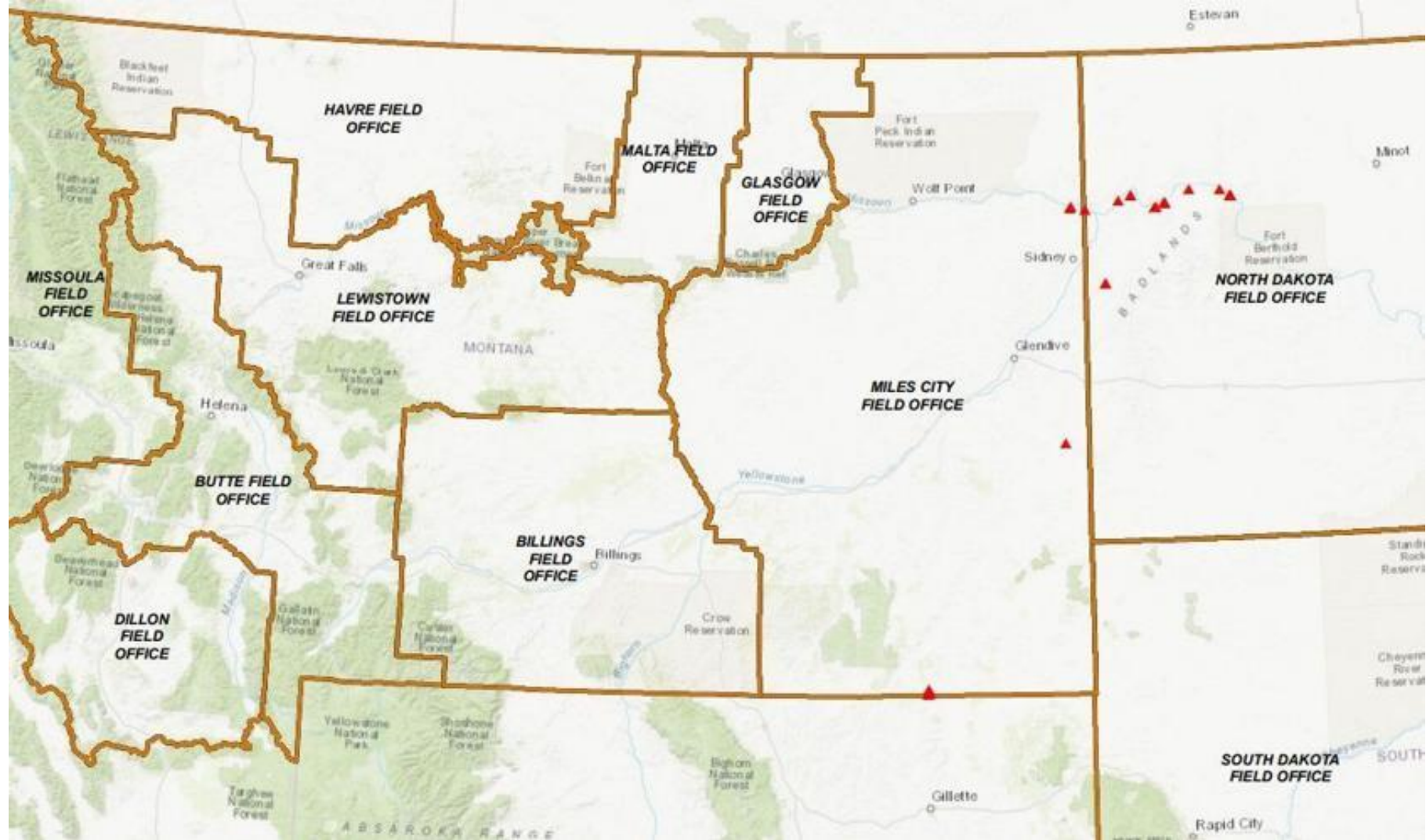
Wetland and Riparian Mapping Status by USGS Topographic Quad



2025/2026 Monitoring

- **BLM Assessment, Inventory, and Monitoring (AIM)**
 - Lotic, Terrestrial, Riparian & Wetland
 - BLM is using MTNHP range maps in plant QC
 - Student involvement-Glasgow





2025/2026 Monitoring

- **BLM Assessment, Inventory, and Monitoring (AIM)**
 - Lotic, Terrestrial, Riparian & Wetland
 - BLM is using MTNHP range maps in plant QC
 - Student involvement-Glasgow
- **USFS Annual Grass Monitoring**
 - Lolo NF and Helena-Lewis & Clark NF
- **National Wetlands Condition Assessment (NWCA)**
 - EPA
 - 2026



Technical Trainings

- **Grass ID Workshop**
 - Sponsored by USFS Region 1
 - Helena, MT
- **Rangeland Plant ID workshop**
 - AIM
 - Collaborating with MT/Dak BLM
 - Zortman, MT
- **Hydric Soils Training 2026**
 - Sponsored by DEQ



Hydric soils you might see in rangeland wetlands...



Histosols



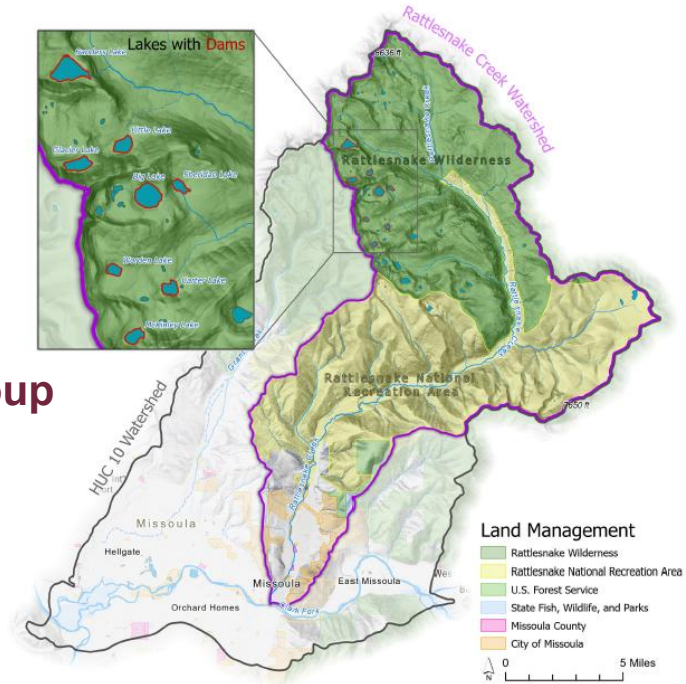
Gleying



Redox

WaterSmart

- **Matt Trentman, OCRMW Associate Director**
- **Planning and Watershed Group development grant**
- **Collaboration with Rattlesnake Creek Watershed Group**
- **Workshops with city, county, state, federal, and non-profit partners**
- **Focus on weeds, water, and climate**





Exhibition Game - Montana State vs. [illegible]

STEERING
LITES

CAT

U.S. Bank

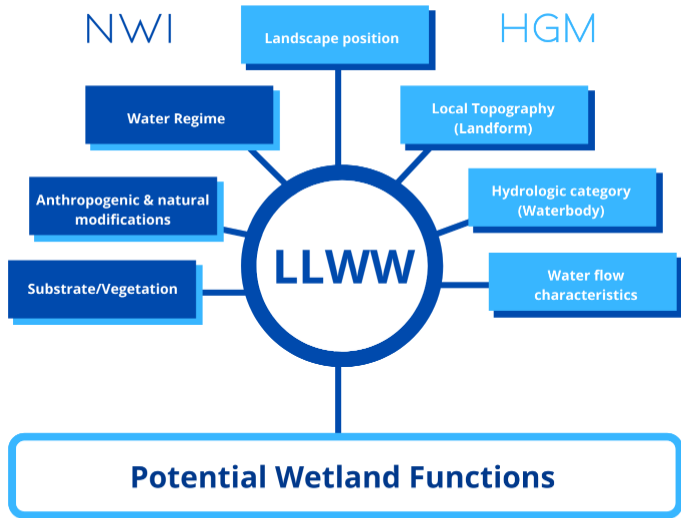
Valley Health

BIG SKY

MONTANA
30



LLWW - Landscape Position, Landform, Water Flow Path, and Waterbody Type



NWI CODE

R3UBH

R	System	Riverine
3	Subsystem	Upper Perennial
UB	Class	Unconsolidated Bottom
H	Water Regime	Permanently flooded



LLWW CODE

LOR1THgf

LO	Landscape Position	Lotic
R1	Waterbody Flow Duration	Perennial flow
TH	Flow Path	Throughflow
gf	Modifier	Geomorphic floodplain

PEM1A

P	System	Palustrine
EM	Class	Emergent
1	Subclass	Unconsolidated Bottom
A	Water Regime	Temporarily flooded



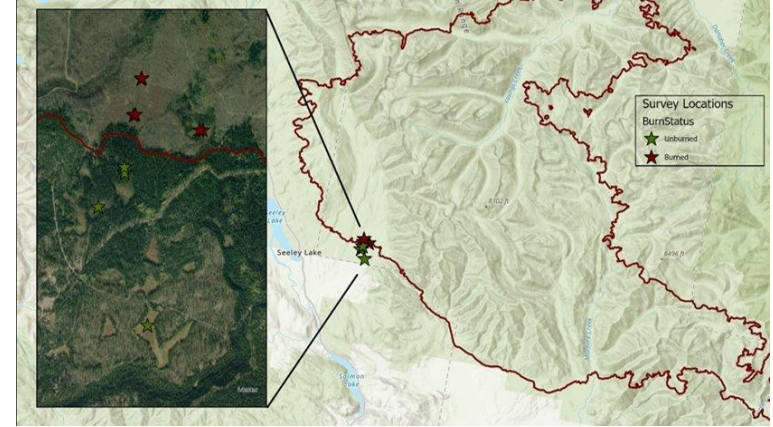
LOBATHgf,it,ox

LO	Landscape Position	Lotic
BA	Landform	Basin
TH	Flow Path	Throughflow
gf	Modifier	Geomorphic floodplain
it	Modifier	Temporary Intermittent Flow
ox	Modifier	Oxbow

- Streamflow maintenance
- Surface water retention
- Groundwater recharge/storage/flow
- Nutrient cycling & transformation
- Carbon sequestration
- Maintain characteristic detrital biomass
- Generation & export of organic carbon
- Sediment/particulate retention
- Bank & shoreline stabilization
- Fish & aquatic invertebrate habitat
- Energy dissipation
- Maintain spatial structure of habitat
- Waterfowl & waterbird habitat
- Other wildlife habitat
- Diverse wetland plant communities
- Maintain wetland connectivity & interspersions
- Characteristic plant community resilience & maintenance
- Maintain wetland connectivity & interspersions

EPA Wetland Program Development Funding

- Wetland Program Plan
- Montana Wetland Council Support
- Wetland Plant ID Workshops
- Fire-affected Wetlands in Montana





Thank you

karyn.hajek@mso.umt.edu
jennifer5.jones@mso.umt.edu

